

MIDDLE PRIMARY MUSEUM TOUR

Teacher Overview

OUTCOMES

The Hahndorf Academy Middle Primary tour will:

- Encourage students to identify and acknowledge the First Nations (Peramangk) people of the Adelaide Hills.
- Assist students to investigate the experiences and contributions of the German community who migrated to the Hahndorf area of the early South Australian colony in 1838.
- Enrich student appreciation of the Hahndorf Academy historical site through researching the extensive Museum displays and listening to an interesting Tour Guide talk.
- Providing the opportunity for students to further develop independent research skills through completion of the Investigate the History of Hahndorf Booklet.

OUTLINE

- Our Tour Guide will meet your class outside the Hahndorf Academy at the designated time. Tour Guide will take you to the Bukatila Native Garden along the side of the building.
- Tour Guide will complete an acknowledgement of country and introduce the story of the Peramangk people, the native garden and its cultural objectives.
- Tour Guide will lead the class inside to the Stempel Museum room. They will give a brief explanation of the Museum layout and distribute Investigate the History of Hahndorf activity sheet.
- Students can EITHER commence their own research to complete the activity with help from Tour Guide and Teacher
- OR the Tour Guide will provide a tour to draw attention to relevant exhibits and engage students with questions and answers.
- An optional Mystery Object activity is available.

Estimated time for this research task is 30 mins.

CURRICULUM

This tour elaborates on the following Australian Curriculum Frameworks Version 9.0.

Year 5 History Knowledge and Skills

Year 5 focuses the role of a significant individual or group, including First Nations Australians and those who migrated to Australia, in the development of events in an Australian colony

AC9HS5K03	investigating the experiences and contributions of a particular migrant group within a colony, such as the Germans in South Australia
AC9HS5K04	the influence of people, including First Nations Australians and people from other countries, on the characteristics of a place
AC9HS5S07	present descriptions and explanations, drawing ideas, findings and viewpoints from sources and using relevant terms and conventions

RESOURCES

Hahndorf Academy will provide all resources necessary for tours.

- Investigate the History of Hahndorf activity sheets & reward stickers.
- Experienced Tour Guide to facilitate the Middle Primary tour and respond to questions.

Hahndorf was originally named Bukatila, meaning deep pool. Hahndorf Academy acknowledges that we work and walk upon the ancient lands of the Peramangk Nation and pay our respect to Peramangk Elders past and living today as the traditional custodians of this ancient Warta.



ROLES & RESPONSIBILITIES

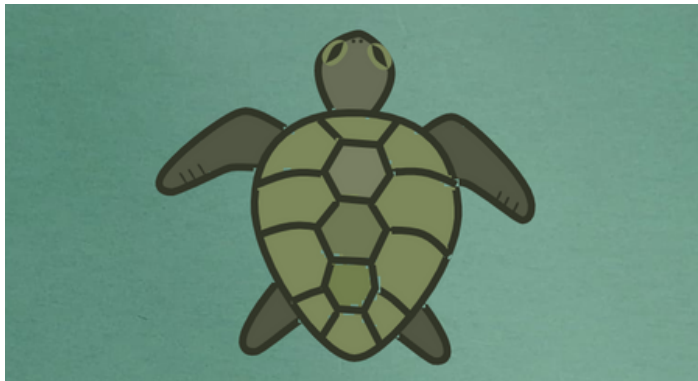
Participating school staff are responsible for:

- The supervision and Duty of Care at all times of students participating in the tour.
- Providing transport arrangements to deliver students to the Hahndorf Academy at the pre-arranged meeting time.
- Completing the Hahndorf Academy Tour survey (2 minutes to complete) to assist with on-going School Tour Program evaluation

Hahndorf Academy staff are responsible for:

- Managing bookings and liaising with Teachers prior to the tour date. Answering queries and directing Teachers to relevant resources on the website.
- Maintaining current Working with Children Checks.
- Meeting with tour group at the scheduled time and guiding Teachers and students into and out of the building.
- Ensuring all Tour resources are available and in appropriate condition.
- Providing accurate and relevant information in a friendly and interesting manner.
- Conducting Tour activities in an organised and meaningful way.

SUGGESTED FOLLOW-UP ACTIVITIES



Aboriginal language game

This online game from the National Museum of Australia features the Guugu Yimidhirr Aboriginal language from Northern Queensland. It's a fun, free game for school-aged children that develops their understanding and appreciation of First Nation's culture.

You can play online [here](#).



Are you tougher than your ancestors?'

This children's TV series explores Australian history. The episode 'Hahndorf - Pioneer Living German Style!' was filmed in Hahndorf and showcases what life was like for the first German migrants.

You can download the episode and a teacher's toolkit from the Australian Children's Television Foundation [here](#). Watch the Hahndorf episode with your class and discuss whether they could survive in colonial times!



Schmidt-Rodert Hof (barn yard complex)

Do you want to explore more around Hahndorf?

You can visit the Schmidt-Rodert Hof featured in 'Are you tougher than your ancestors' Hahndorf episode, located at the eastern end of Hahndorf's Main Street. Find out more information [here](#).

The Hof contains early timber structures including a barn where people lived alongside their animals, and a working wood-fired oven.

We can arrange a guided tour for your class through the National Trust of Australia. This is private property so access is only available for guided tours. A \$2 per student fee applies.